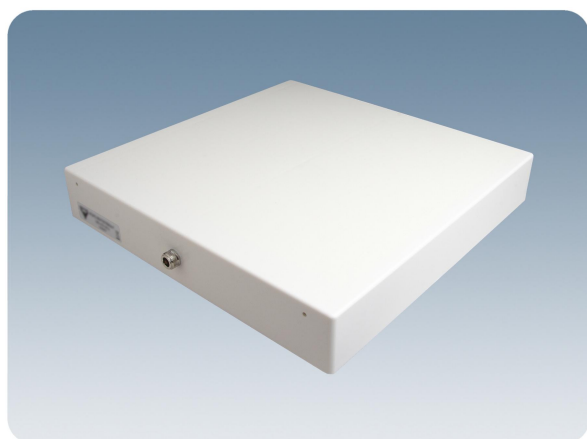


PCPI xH/TETRA/...

Indoor Left or Right Hand Circularly Polarized Patch Antennas for mounting on Wall or Ceiling

DESCRIPTION

- Low-profile antenna for the 380 - 470 MHz band.
- PCPI xH/TETRA/... is a Left or Right Hand Circularly Polarized patch antenna for indoor use.
- Circular polarization is chosen to avoid out-of-phase signals.
- Reduces flutter considerably.
- Specially designed for closed rooms.
- Covers approx. 50 MHz with a radiation of approx. 7 dBic.
- The antennas are carefully sealed with a discreet cover.
- The connector is placed at one side to enable mounting close to a wall or a ceiling.
- Including mounting bracket.
- Connection also available on backside (see overleaf).



STANDARD VERSION ORDERING DESIGNATIONS

TYPE	FREQUENCY	PRODUCT NO.
PCPI RH/TETRA/s-f	380 - 430 MHz	100000426
PCPI LH/TETRA/s-f	380 - 430 MHz	100000425
PCPI RH/TETRA/l-h	430 - 470 MHz	100000442
PCPI LH/TETRA/l-h	430 - 470 MHz	100000441
ACCESSORIES		
PATCH-WAMO		100000511

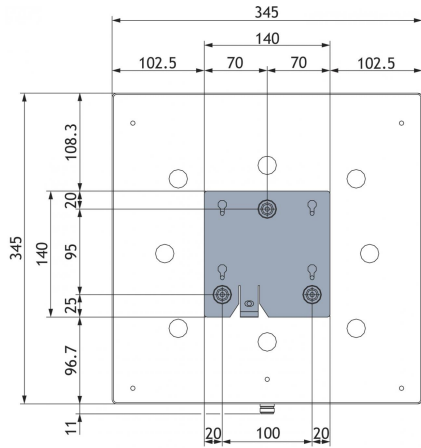
BC VERSION ORDERING DESIGNATIONS

TYPE	FREQUENCY	PRODUCT NO.
PCPI RH/TETRA/s-f-BC	380 - 430 MHz	100000468
PCPI LH/TETRA/s-f-BC	380 - 430 MHz	
PCPI RH/TETRA/l-h-BC	430 - 470 MHz	
PCPI LH/TETRA/l-h-BC	430 - 470 MHz	

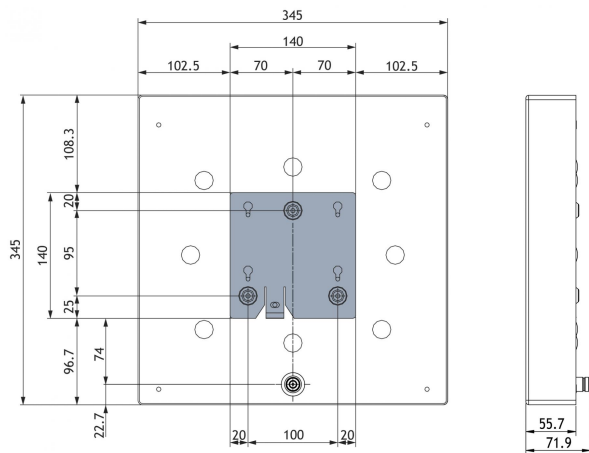
SPECIFICATIONS

ELECTRICAL	
MODEL	PCPI xH/TETRA/...
ANTENNA TYPE	Left or right hand circularly polarized patch antenna
FREQUENCY	380 - 470 MHz covered by two models
IMPEDANCE	Nom. 50 Ω
POLARIZATION	Circular
GAIN	Approx. 7 dBic
BANDWIDTH	≥ 50 MHz
HALF POWER BEAMWIDTH	Approx. 80° (H- and E-plane)
SWR	≤ 2
MAX. POWER	100 W
MECHANICAL	
TEMP. RANGE	-30° C → +75° C
CONNECTOR	N-female
COLOUR	Marine white
MATERIALS	Cover: ABS (white) Chassis: Aluminium
SIZE (L x W x H)	Approx. 345 x 345 x 60 mm / 13.58 x 13.58 x 2.36 in.
WEIGHT	Approx. 2.3 kg / 5.07 lb.
MOUNTING	For mounting on wall or ceiling ø5 mm / 0.20 in. (three holes) (see mounting details)

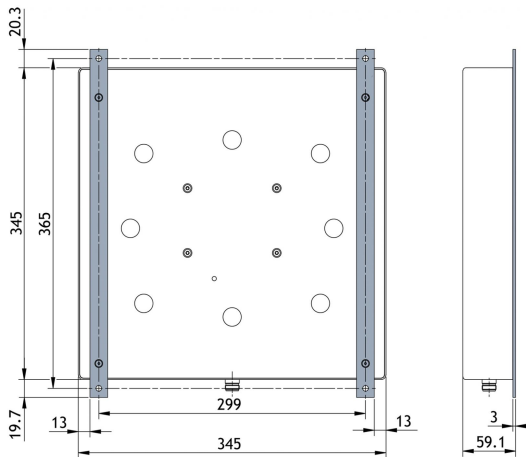
MOUNTING DETAILS



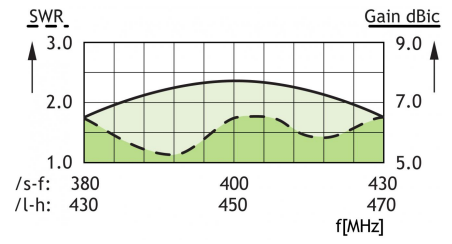
MOUNTING DETAILS BC VERSION



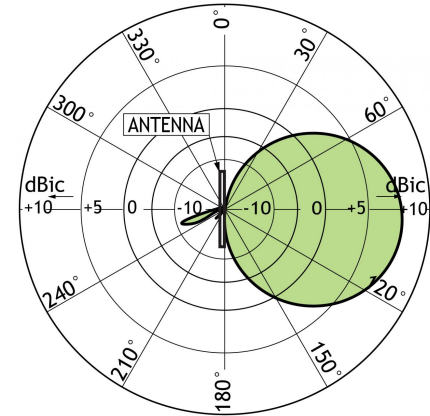
MOUNTING DETAILS (PATCH-WAMO)



TYPICAL GAIN AND SWR CURVES

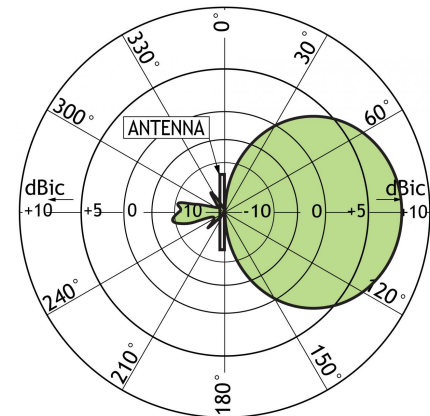


TYPICAL RADIATION PATTERN (E-PLANE)




This curve shows the radiation patterns in the vertical plane.

TYPICAL RADIATION PATTERN (H-PLANE)



This curve shows the radiation patterns in the horizontal plane (horizontal coverage).

 PROCOM A/S reserve the right to amend specifications without prior notice.
02/10/14