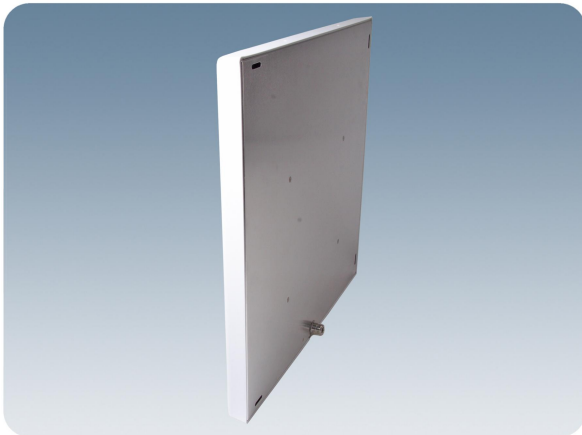
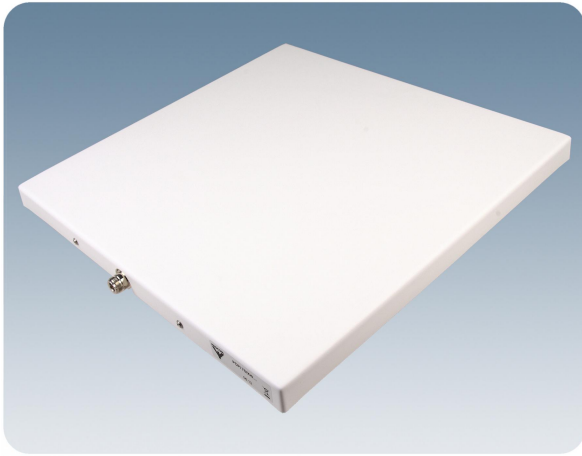


# PCPI 70/xH/...

Indoor Left or Right Hand Circularly Polarized Patch Antennas for mounting on Wall or Ceiling

## DESCRIPTION

- Low-profile antenna for the 450 MHz band.
- PCPI 70/xH/... is a **Left or Right Hand Circularly Polarized** patch antenna for indoor use.
- Circularly polarized antenna is chosen to avoid out-of-phase signals.
- Reduces flutter considerably.
- Specially designed for closed rooms.
- Covers approx. 20 MHz with a radiation of approx. 7 dBic 3 dBd.
- Full size  $\frac{1}{2} \lambda$  patch antennas.
- The antennas are carefully sealed with a discrete cover.
- The connector is placed at one side to enable mounting close to a wall or a ceiling.
- Chassis also available in stainless steel PCPI 70R/xH/... (see ordering designations below).
- Connection also available on backside (see overleaf).



PCPI 70/xH/...-BC

## SPECIFICATIONS

ELETRICAL	
MODEL	PCPI 70/xH/...
ANTENNA TYPE	Left or right hand circularly polarized patch antenna
FREQUENCY	380 - 470 MHz covered by four models
IMPEDANCE	Nom. 50 $\Omega$
POLARIZATION	Circular
GAIN	Approx. 7 dBic 3 dBd
BANDWIDTH	$\geq 20$ MHz @ SWR $\leq 1.8$
HALF POWER BEAMWIDTH	Approx. 80° (H- and E-plane)
SWR	$\leq 1.5$ f.res.
MAX. POWER	100 W
MECHANICAL	
TEMP. RANGE	-30°C $\rightarrow$ +75°C
CONNECTOR	N-female
COLOUR	Marine white
MATERIALS	Cover: PS (white) Chassis: Aluminium
SIZE (L x W x H)	Approx. 415 x 415 x 25 mm
WEIGHT	Approx. 1.8 kg
MOUNTING	For mounting on wall or ceiling $\varnothing 4.5$ x 20 mm (four holes)

## STANDARD VERSION ORDERING DESIGNATIONS

TYPE	PRODUCT NO.	FREQUENCY
PCPI 70/LH/s	100000146	380 - 400 MHz
PCPI 70/LH/f	100000147	410 - 430 MHz
PCPI 70/LH/l	100000148	430 - 450 MHz
PCPI 70/LH/h	100000149	450 - 470 MHz
PCPI 70/RH/s	100000145	380 - 400 MHz
PCPI 70/RH/f	100000143	410 - 430 MHz
PCPI 70/RH/l	100000144	430 - 450 MHz
PCPI 70/RH/h	100000150	450 - 470 MHz

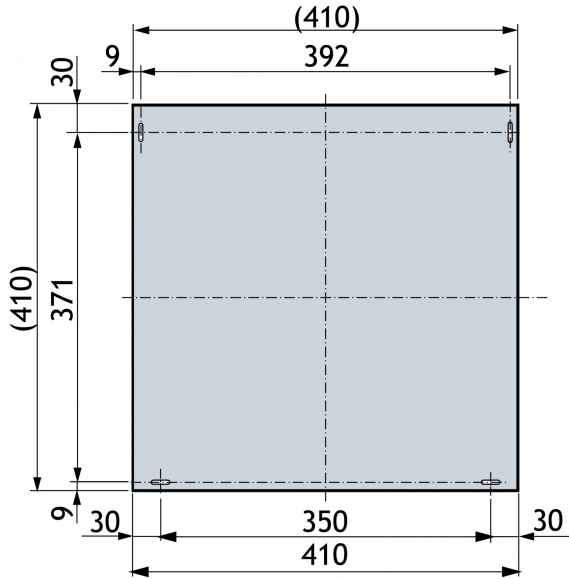
## STAINLESS STEEL VERSION ORDERING DESIGNATIONS

TYPE	PRODUCT NO.	FREQUENCY
PCPI 70R/LH/s	100000302	380 - 400 MHz
PCPI 70R/LH/f	100000303	410 - 430 MHz
PCPI 70R/LH/l	100000304	430 - 450 MHz
PCPI 70R/LH/h	100000305	450 - 470 MHz
PCPI 70R/RH/s	100000306	380 - 400 MHz
PCPI 70R/RH/f	100000151	410 - 430 MHz
PCPI 70R/RH/l	100000307	430 - 450 MHz
PCPI 70R/RH/h	100000152	450 - 470 MHz

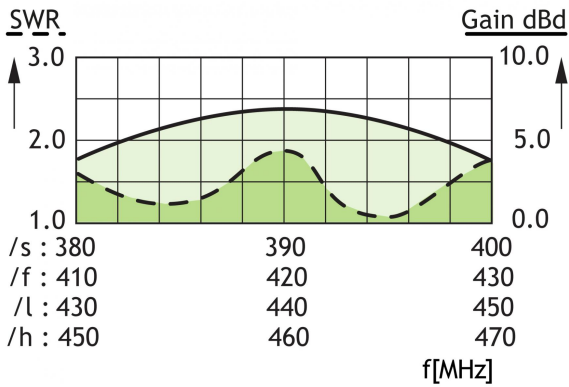
BC VERSION ORDERING DESIGNATIONS

TYPE	PRODUCT NO.	FREQUENCY
PCPI 70/LH/s-BC	100000337	380 - 400 MHz
PCPI 70/LH/f-BC	100000338	410 - 430 MHz
PCPI 70/LH/l-BC	100000339	430 - 450 MHz
PCPI 70/LH/h-BC	100000340	450 - 470 MHz
PCPI 70/RH/s-BC	100000333	380 - 400 MHz
PCPI 70/RH/f-BC	100000334	410 - 430 MHz
PCPI 70/RH/l-BC	100000335	430 - 450 MHz
PCPI 70/RH/h-BC	100000336	450 - 470 MHz

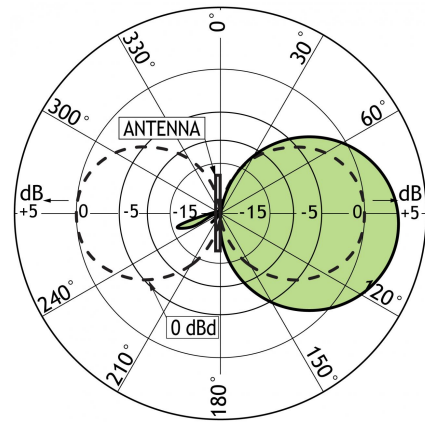
MOUNTING DETAILS (Dimensions excl. cover)



TYPICAL GAIN AND SWR CURVES

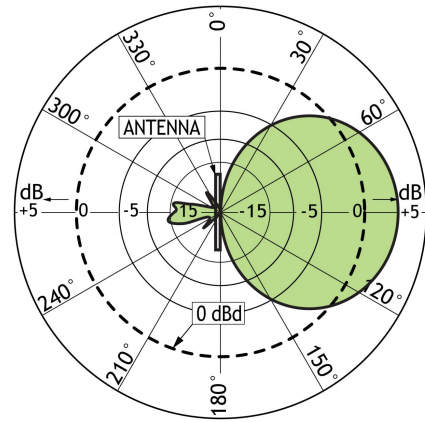


TYPICAL RADIATION PATTERN (E-PLANE)



This curve shows the radiation patterns in the vertical plane.

TYPICAL RADIATION PATTERN (H-PLANE)



This curve shows the radiation patterns in the horizontal plane (horizontal coverage).



PROCOM A/S reserve the right to amend specifications without prior notice.

14/01/15