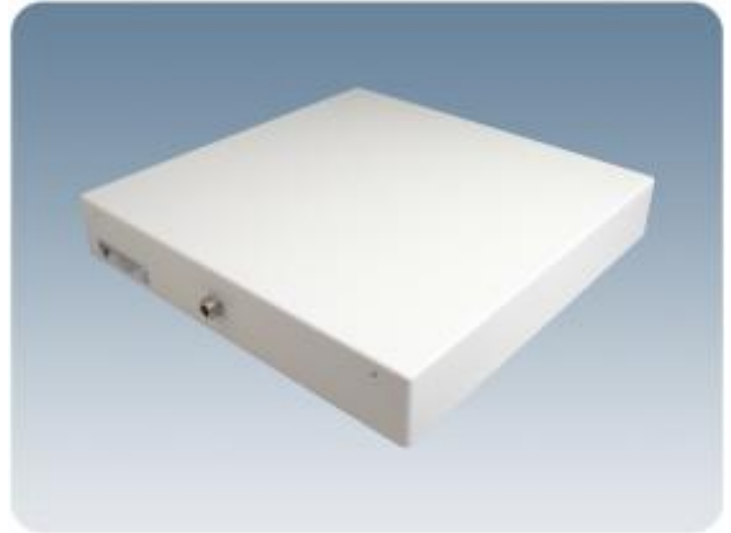


## PLPO/TETRA/

Outdoor Linearly Polarized low profile Antennas for mounting on Ceiling or Mast

- Low-profile antenna for the 380 - 470 MHz band.
- PLPO/TETRA/... is a patch antenna for outdoor use.
- Covers approx. 50 MHz with a radiation of 7 dBi.



- The antenna is carefully sealed with a discreet cover.
- The connector is placed at one side to enable mounting closed to a wall.
- Including wall mounting bracket. PATCH-MAMO and PATCH/WAMO to be ordered separately.

### ORDERING DESIGNATIONS

TYPE	FREQUENCY	PRODUCT NO.
PLPO/TETRA/s-f	380 - 430 MHz	100000424
PLPO/TETRA/l-h	430 - 470 MHz	100000446
PLPO/TETRA/s	380 - 410 MHz	100000476
ACCESSORIES		
PATCH-MAMO		100000447
PATCH-WAMO		100000511

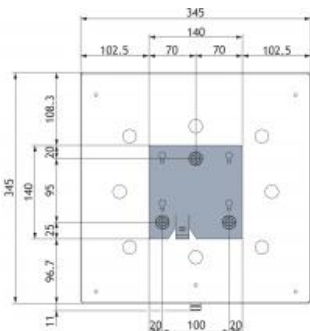
SPECIFICATIONS

ELETRICAL			
MODEL	PLPO/TETRA/s-f	PLPO/TETRA/l-h	PLPO/TETRA/s
ANTENNA TYPE	Linearly polarized patch antenna		
FREQUENCY	380 - 430 MHz	430 - 470 MHz	380 - 410 MHz
IMPEDANCE	Nom. 50 Ω		
POLARIZATION	Linear		
GAIN	Approx. 7 dBi		
BANDWIDTH	≥ 50 MHz @ SWR ≤ 2	≥ 50 MHz @ SWR ≤ 2	≥ 30 MHz @ SWR ≤ 1.6
HALF-POWER BEAMWIDTH	Approx. 80° (H- and E-plane)		
SWR	≤ 2	≤ 2	≤ 1.6
MAX. POWER	100 W		
ANTISTATIC PROTECTION	All metal parts DC-grounded (Connector shows a DC-short)		

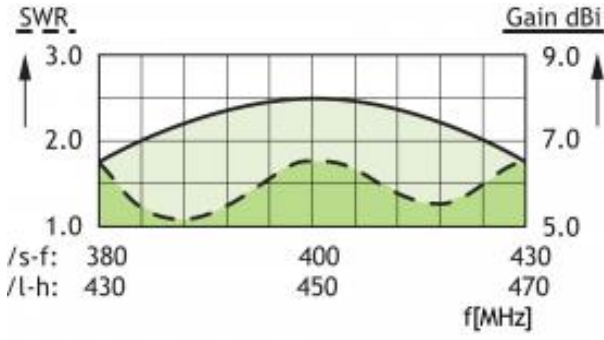
MECHANICAL	
CONNECTOR	N-female
WIND LOAD	173 N @ 160 km/h / 173 N @ 100 mph.
COLOUR	Marine white
MATERIALS	Cover: ABS (white) Chassis: Aluminium
SIZE (L x W x H)	Approx. 345 x 345 x 60 mm / 13.58 x 13.58 x 2.36 in.
WEIGHT	Approx. 2.3 kg / 5.07 lb.
MOUNTING	For mounting on wall ø5 mm / 0.20 in. (three holes) (see mounting details) or mast on 40 - 55 mm / 1.57 x 2.17 in. dia. mast tube

MOUNTING & PATTERN

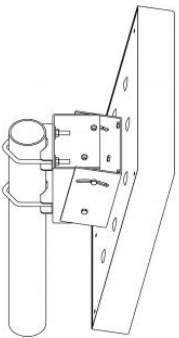
MOUNTING DETAILS (WALL MOUNTING BRACKET INCLUDED)



TYPICAL GAIN AND SWR CURVES

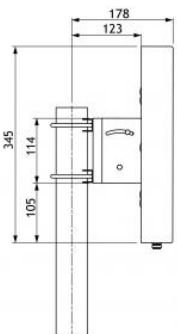


MAST MOUNTING BRACKET: PATCH-MAMO (ORDERED SEPARATELY)

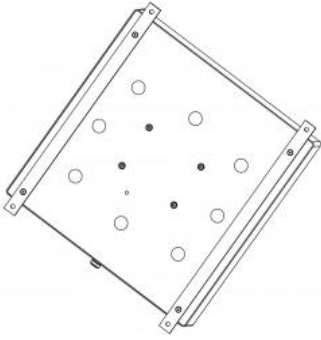


Tilt adjustable from +5°/-30°

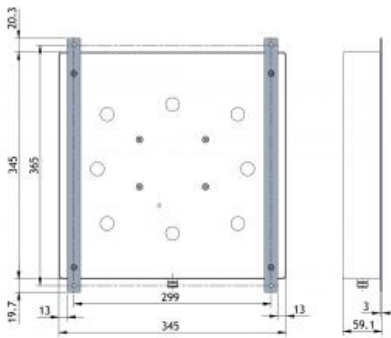
MOUNTING DETAILS (PATCH-MAMO)



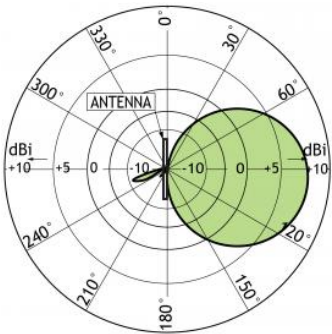
WALL MOUNTING BRACKET: PATCH-WAMO (ORDERED SEPARATELY)



MOUNTING DETAILS (PATCH-WAMO)



TYPICAL RADIATION PATTERN (E-PLANE)



This curve shows the radiation patterns in the vertical plane.

TYPICAL RADIATION PATTERN (H-PLANE)



This curve shows the radiation patterns in the horizontal plane (horizontal coverage).