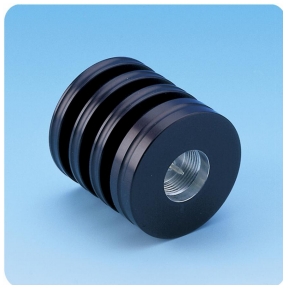


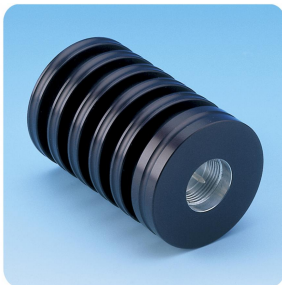
COAXIAL LOADS (I)

DESCRIPTION

- Procom loads/terminations are matched to 50 ohms characteristic impedance. Matched loads provide a termination designed to absorb all the incident power with very little reflection. Terminations are used in a wide variety of systems; any port of a multi-port microwave device that is not involved in the measurement, or in a system, should be terminated in its characteristic impedance in order to ensure an accurate measurement.
- This series of coaxial loads have very low SWR and are especially suitable for use with:
 - Power Hybrids.
 - Isolators.
 - Coaxial Transmission Lines.
 - Power Monitors.
 - Wattmeters.
 - Receiver Multicouplers.
- The surface of the dummy loads is black anodized.



PRL 15W



PRL 30W



PRL 3W



PRL 1W

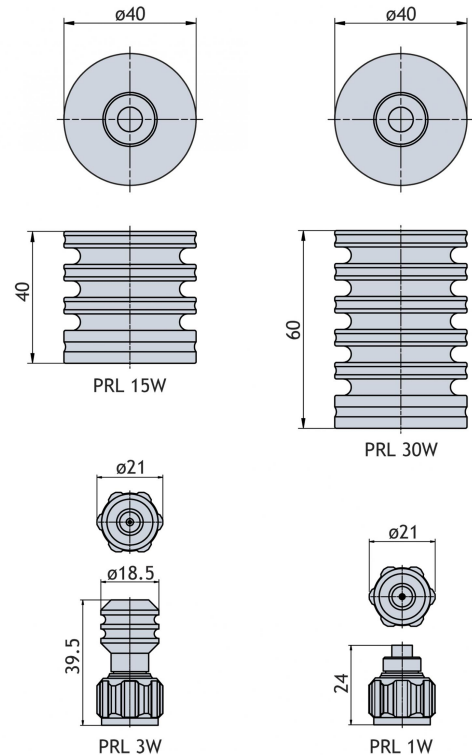
ORDERING DESIGNATIONS

TYPE	PRODUCT NO.
PRL 1W	210000640
PRL 3W	210000869
PRL 15W	210000553
PRL 30W	210000554

SPECIFICATIONS

ELECTRICAL				
MODEL	PRL 1W	PRL 3W	PRL 15W	PRL 30W
FREQ. RANGE	0-1 GHz	0-1.0 (2.5) GHz	0-1.5 (2.5) GHz	0-1.5 (2.5) GHz
MAX. INPUT POWER	1W	3W	15W	30W
MAX. INPUT POWER with extra cooling	1W	3W	30W	60W
IMPEDANCE	Nom. 50 Ω	Nom. 50 Ω	Nom. 50 Ω	Nom. 50 Ω
SWR	< 1.5	< 1.15 (≤ 1.5)	< 1.15 (≤ 1.5)	< 1.15 (≤ 1.5)
MECHANICAL				
TEMP. RANGE	-30°C → +60°C	-30°C → +60°C	-30°C → +60°C	-30°C → +60°C
CONNECTORS	N-male	N-male	N-male	N-male
DIMENSIONS	ø21 x 24 mm	ø21.2 x 39.5 mm	ø40 x 40 mm	ø40 x 60 mm
WEIGHT	Approx. 25 g	Approx. 50 g	Approx. 105 g	Approx. 180 g

DIMENSIONS



PROCOM A/S reserve the right to amend specifications without prior notice.
30/04/15